

SHORELINER

BLA's 2024 Transformation . . .

From: Manual Winch



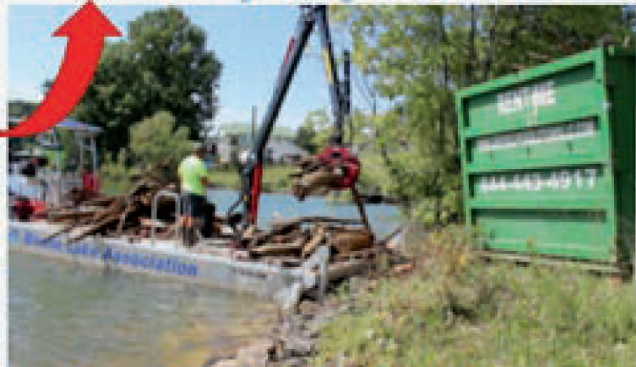
To: Logging Crane



From: Controlled Burning



To: Recycling into Mulch



From: Monthly Sampling



To: Semi-Monthly BLA Posting



BOONE LAKE ASSOCIATION

Piney Flats, TN 37686

www.boonelakeassociation.org

boonelakeassociation@gmail.com



www.facebook.com/boonelakeassociation

WATCHING THE WATERS

Summer/Fall 2024

BLA Hotline: 423.360.5057



@boonelakeassociation

Clear – Clean – Educate

As the sun sets on trees turning color and the lake is dropping toward winter pool, it is a good time to look back on what wonderful summer memories we've created on Boone Lake. Since serving as your President, I cannot recount how many of you have shared your childhood lake-stories that you wish to preserve for the next generation. Thank you for your encouragement to not only me, but to the amazing BLA Board volunteers that provide you the planning, fundraising, and management—year-round. ***Come to one of our 1st Tuesday monthly meetings*** at 6PM in the Winged Deer Park Administration building, to visit, to make a few new friends, and give back to your lake community.

Clear: The SK-2 crane barge has allowed the removal of the incursion of massive trees from the rivers and lake-bank erosion. Sullivan County continued to state they had no ability to remove the logs and debris like Johnson City does from the Watauga River end at Winged Deer Park.

Therefore, BLA entered a contract with a private company, costing over \$6,000 to provide dumpsters at Bluff City and Piney Flats to haul the wood/debris away to be ground up into landscape mulch. Not only does this eliminate the unreasonable barging of logs many miles downstream to burn at the Point 9 island during the winter but also ***maximizes BLA's commitment to the environment.***

Clean: BLA began water testing in 2005 taking water samples from a half-dozen lake locations. After TVA quit sampling and testing the waters at Boone Dam beach about 15 years ago. BLA was the only organization "Watching the Waters". In 2024, BLA doubled the frequency of sampling/testing from monthly during the season to semi-monthly (see the Water Quality report for details). Since no government agency will sample and test Boone Lake for you, ***BLA will strive to double again our water quality sampling and testing for 2025.*** This expansion would provide our Boone Lake community test results available weekly on the BLA website in time for weekend recreation activities.

Educate: The Tennessee Association of Conservation Districts (TACD) ***selected BLA for their Conservation Promotion Award*** for our ongoing work on Boone Lake and furthering the education of the next generation for soil and water conservation throughout Northeast Tennessee.

Finances. BLA has received ***83% of the Individual Contributors goal for 2024*** of \$100,000 and we hope end-of-year giving will close the gap. These 441 contributors represent 73% of the 2024 goal of 601 contributors our all-time high of 10 years ago before TVA took the lake down to repair the dam. 441 represents just 25% of all Boone Lake lakefront properties. Despite these shortfalls, in 2024 ***BLA has tripled the amount of dollars spent clearing and cleaning Boone Lake*** from just 5 years ago.

In closing I thank you for your contributions and . . . **JOIN US—HELP US—HELP YOU.**

Frank

BLA's 19th President/CEO

Your BLA Board

- Frank Hahne. CEO.. Board member since 2020
- Jim Slaight.. CFO and Water Quality Committee Chair ..Board member since 2016
- Jeanette Bailey..COO, Lake Operations ..Board member since 2020
- Ann Larson. Secretary, Shoreliner Editor, ..Board member since 2013
- Jerry Frank.. Lake Ops Committee, Platinum Sponsor
...Board member since 2008
- Gary Parker.. Contributor Committee Chair, ...Board member since 2016
- Laurie Spring. Community Outreach, ...Board member since 2021
- Karen Stigall.. Contributor Committee, ...Board member since 2024
- Janise Sizemore.. Lake Ops Committee..
...Board member since 2024

HELP TO OUR NEIGHBORS.... HURT BY HELENE

Our Boone Lake community is giving thanks that our dams and rivers avoided the devastation Helene wreaked upon our neighboring Tennessee and North Carolina counties. The overflow from Watauga has overwhelmed the Watauga River channel with debris and trees, but within the capacity of the BLA crew to clear. Now, more importantly, how can we help others?

At our October monthly meeting Every BLA Board member shared what their churches, families and friends are doing and how we can do better by reaching others who wish to help but may not know how. **JOIN US—HELP US— HELP OUR NEIGHBORS—**If you do not know how, call our Hotline (423) 360-5057 and one of our Board will come along side you and guide you to where you can best help. Remember, this will be a long, long recovery—months and years, not days and weeks.



Website/Media Update

Greetings fellow lake lovers! With my media and IT background, the BLA has put me in charge of media interviews, social media, and I have taken over as webmaster of our website: boonelakeassociation.org. In 2025, BLA will post every BLA water test result on our website, since no other agency currently

provides this service for Boone Lake. The website has been updated with current information on the BLA crews and their clean-up sites. We now feature a lake events page, where we list the goings-on on Boone Lake. If you know of events coming up, my email address is at the bottom of the page.

Send them to me and we'll post them on our site. Plus, if you have special pictures of these events, send those along too! We want to keep the site current with info and images of all the things happening on our beautiful lake!



Bob Honeycutt

Contributor Update

With a little more than three and a half months left in 2024 we currently have 441 contributors to BLA. This is short of where we were last year at this time (457) and making our goal of 600 annual contributors, matching 2014, more and more elusive. Matching last year's total of 536 is also in jeopardy. Beginning last year BLA underwent an extensive outreach to bring new contributors on board. It was quite

successful resulting in over 150 entirely new contributors. However, during the same period, we have lost far more of our previously consistent contributors to BLA. As stated in many of the previous reports, there are at least 1,798 lakefront owners on Boone Lake and over 1,000 slip owners that enjoy our incredibly clean and safe lake. It's unfortunate that only 1 in 5 of those stakeholders contribute to BLA.

There are several ways to make your contribution, via PayPal at boonelakeassociation@gmail.com, credit card on our website boonelakeassociation.org or by sending a check via the form included in this Shoreliner. Any amount you can afford will help maintain our lakes' beauty and safety. Again, thanks to all those loyal supporters of BLA.



Gary Parker

BLA at Meet the Mountains (MTM)



Your BLA had an educational booth at the Johnson City Meet the Mountains Festival held August 9 and 10 on the lakefront at Winged Deer Park. Education is one of the BLA foundational pillars along with clear the waterways and test the waters.

It was an opportunity to share with the community the work that is done by the BLA on Boone Lake.

The Hatley Pointe logo, featuring a stylized green mountain peak and the text "Hatley Pointe". Below the logo is a scenic view of a snowy mountain slope with evergreen trees and a ski lift.

Hatley Pointe

TOP MOUNTAIN DESTINATION
ON THE

Offering year round adventure & amenities, retail, full bar & restaurant,
all-new lodge, upgraded & uncrowded slopes, and impeccable service.

EAST COAST

BOUTIQUE MOUNTAIN RESORT | WWW.HATLEYPOINTE.COM | #HATLEYPOINTE
578 Valley View Cir. Mars Hill, NC 28754



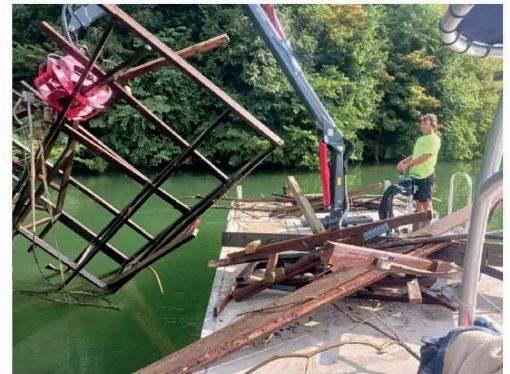
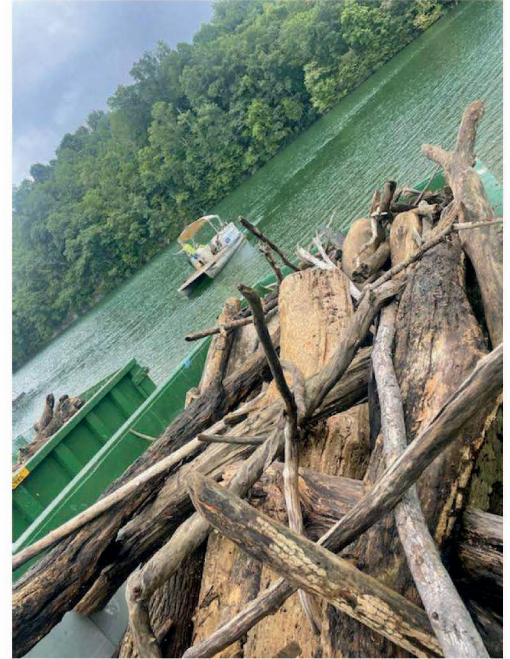
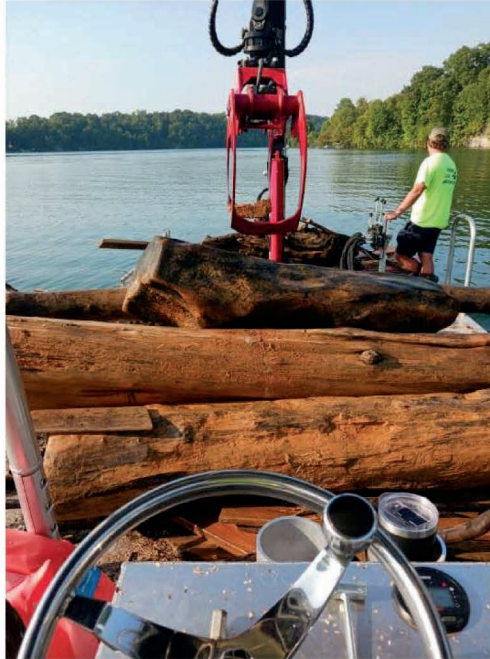
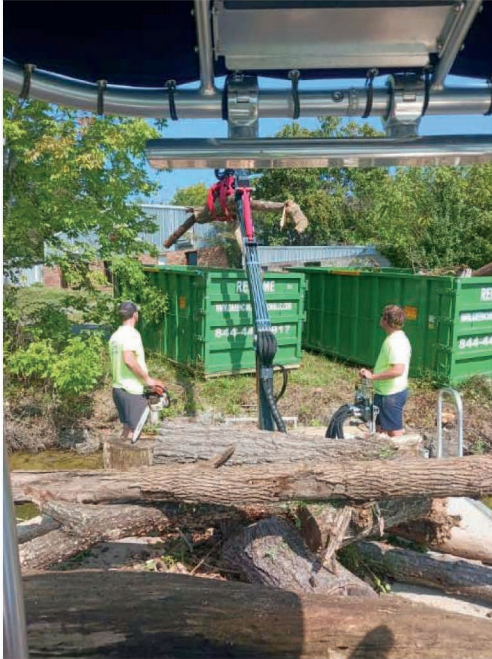
BLA's Loggin' for You!

Do you remember the first days of school in the Fall...It seems every year the first writing assignment was "What I did on my Summer Vacation". If you grew up in NE Tennessee your answer might have been something like this...."I spent a week at Myrtle Beach", or "camping in the Smoky Mountains". "I visited Grandpa and

Grandma on the farm" or "I did a lot of fishing". Or maybe "I learned to water ski on Boone Lake"...

Our BLA crew does not take a summer vacation. They spent many hours this summer hauling and cutting logs, removing lake trash, capturing a derelict dock or two, returning a dock

or jet ski or loose floating boat to its rightful owner. On these two pages you will see photos of the crew at work and read about Lake Operations two big summer projects...in Bluff City and at Point #9. The crew worked so you could enjoy your summer vacation on a clean and safe Boone Lake...



Lake Operations Report

It's Football time in Tennessee so it's time for TVA to begin their annual Boone Lake drawdown. It was an amazing hot and dry Summer!

The BLA board approved \$4000 not including labor and fuel for the Bluff City Round Up, with support from East Tenn Rent-Alls and Lakeview RV Park. Bluff City area became our crew's focus in the month of July. Our workhorse, Crane barge was put to the test with the extra-large logs. The residential shoreline was cleared of logs and debris. A total of 14 containers were filled with wood and trees which were then turned into 451 cubic yards of mulch by South East Mowing, LLC,

(SEM). We understand the horseshoe is still full of trash and logs continue to flow from the Holston River, but we must all agree BLA has made a noticeable difference. The horseshoe will be cleaned as the lake draw down allows.

Pleased with the success of the Bluff City operation, the Board approved an additional 10 containers (9 were actually filled) to collect the logs from our Boom at Point #9 to reduce the need for excess burning this winter. SEM turned those logs into 294 cubic yards of mulch. We appreciate East Tenn Rent-Alls and TriCity Boat Dock for their support.

The next time you put down mulch in your yard or garden you may just be adding a little bit of Boone Lake to your landscape.



Jeanette Bailey

BLA's lake operations crew of 4 will be working during the winter months cleaning the shoreline and clearing the waterways. We always appreciate emails and calls to our Hotline 423-360-5057 to alert us of logs, debris and unmanned vessels. It takes the Community to keep 130 miles of shoreline and Boone Lake safe and clean. Thank you for your continued support!

Your BLA crew

Nic Fuller, Crew Supervisor

Blake Poland, Lead and Crane Operator

Nick Bailey, Crew

Gavin Guldseth, Crew

Stefan Guldseth, Part time Crew



Water Quality Update

BLA has been sampling Boone Lake waters for almost 20 years. We do not have accurate records going back to 2005 but records since 2014 show only two high E.coli readings, one in 2020 and the most recent one this year. Re-sampling in 2020 showed normal, low levels within three days. The 2024 incident had two high readings and was clear within 5 days. Water flows into and through Boone Lake from the South Holston and Watauga rivers and, in my opinion, allows the lake to return to normal within days. Long periods of heavy rain cause runoff from the farms and fields of our many tributaries and the lake itself. We're blessed with wildlife that uses the fields, farms and lawns and these factors can impact our water quality until normal flows bring the lake back to normal. This year, we doubled the number of samples taken and the frequency with which we take them, and next year, an increased operating budget could double the number and frequency again.

We are a non-profit organization that depends on donations to fund Lake Operations. All Water Quality Program expenses are paid from those donations, including our Lake Ops crew. Many of us, including me, are volunteers who use the lake and have children and/or grandchildren who enjoy the lake, and we want them to be safe. We will publish all results and highlight any non-compliance issues. Through some generous donors we've been able to upgrade the program, but we're



Jim Slaight

not yet satisfied that we're where we need to be. If you contribute: Thank you! If you don't and use Boone Lake, please consider giving and helping us keep Boone Lake enjoyable.

TDEC guidance states that "Generally speaking, untreated recreational waters (springs, streams, ponds, lakes, rivers, reservoirs, or oceans) naturally contain bacteria, viruses, and parasites from the environment. Therefore, there is always some risk associated with recreating in natural waters."

Some Tips:

- Avoid swallowing water when swimming; natural waters may contain disease-causing organisms that can cause gastrointestinal illness if swallowed.
- Swim in an alternate local for a few days after a high reading has been detected.
- Prevent direct contact of cuts and open wounds with recreational water that may cause skin infections.
- Shower with soap after swimming; showering helps remove potential disease-causing organisms.
- Don't swim if you are ill or have a weakened immune system; some organisms are opportunistic and may only cause illness when you are already ill or your

immune system is weakened.

Water Quality Report Example:

Below is an example of a Water Quality report for two sites. Normally we'll report 3-4 sites and the sites will be identified (ie. Pt 17, Rainbow Bridge, etc). The format for all the sites will be as shown. The report provides the parameter, TDEC criteria for the parameter, except where indicated, and the reading at the site at that day. If there is a high reading as pictured in Sample Location 2, it will be highlighted in red and the BLA crew will retest until the high parameter falls within acceptable criteria. The crew will only sample the parameter that falls outside of the criteria, and we'll report all those results.

The E.coli report is either within or exceeds TDEC's criteria. Currently E.coli CFUs are hand counted and higher numbers are impossible to count with accuracy. We hope to budget for a digital colony counter in 2025 that will provide an accurate count of all E.coli readings.

Water Quality Results Example				
Parameter	TDEC Criteria for Recreation (BLA Does Not Sample All TDEC Water Quality Parameters)	Date		
		Sample Location 1	Sample Location 2	
		Readings		
Water Temp °C	<=30.5 deg C at 5 feet	28 Deg C	28 Deg C	
Visibility	IAW Q Value Standards: >3.5 Feet	6 Ft	5 Ft	
TDS	<=500mg/l	76	72	
Nitrates	Nitrates plus Nitrites			0
Nitrites				
Hardness	<=400mg/L			25
Chlorine	<=19ug/L CMC <=11l			0
Alkalinity	<300mg/L			120
PH	>=6.0-9.0<=			6.2
E Coli	<=126 cfu over 30 days or <=487 cfu individual sample			>487
Within TDEC Criteria for Recreation				
Not Within TDEC Criteria for Recreation				
Water Quality Results Example				

Boone Lake Fishing Report

The drawdowns of S. Holston and Watauga typically start during the month of August, which draw larger stripers and largemouth to the mouths of both Rivers. This year has been no different. Fishing will start to get better all over the lake as Autumn starts to set and water temperatures

cool from chillier nights. Boone lake started its winter draw down after Labor Day and this also gets those smallmouths up on humps around the lake to feed especially within a couple miles of Boone Dam. Keep an eye out for large schools of shad on the surface as those water temps cool. Their ever-changing locations may

be good for striper and hybrid fishing as we get into the fall months. Look for all fishing to improve as we get into the fall and the lake cools; so get out there to enjoy the fall colors, and catch a big ole bass!



Derrick Paduch

Now we know why Boone Lake is Drawn Down in September.



Val Kosmider

Sure, it is not every day/week/year that we get inundated with inches of rain in a short period of time.

But the TVA System broadly did its job during the recent storm.

Boone Lake was down about eight feet from full summer pool during the final weeks of September. Then along came Hurricane Helene.

She dumped multiple inches of rain on the Tennessee Valley watershed, inundating many areas, washing our major interstate highways and bridges, and destroying homesteads and even some communities.

Every couple of years there is a movement to keep Boone Lake "higher for longer" in the autumn. Such full pool water levels would give recreational boaters, swimmers and fishermen a longer period of time during which to enjoy the "full pool" of Boone Lake.

The argument to draw the lake down in September is that fall rains could be devastating and that Boone needs to be lower in order to more readily accept the waters from the surrounding mountains. The local soil is not prone to absorption, and thus the runoff is exasperated and quickly fills low lying areas. Without the TVA System, and lakes such as Boone, the likelihood exists for severe devastation.

Helene brought Boone Lake up four feet from the drawn down water level. By my calculation, that is just over 5 billion gallons of water, not including what ran over the dam. The reservoir did exactly what it is designed to do: Control flooding. Without the draw-down and capacity to accept the runoff, the Lake would have been several feet above full pool and invaded the surrounding homes and countryside.

So now we know. While the likelihood

of such rain events remains a low, but an assignable probability, the reasons given for TVA to draw the lake down in September have come to fruition. Having the capacity to accept such runoff likely saved substantial, if not lifesaving, devastation to the surrounding communities.

It's an aggravating trade-off, but one worth enduring.

Meet Our newest Board Member



Janise Sizemore is our newest Board member but she is certainly not new to the BLA family. Janise is the daughter of the late Ken and Ellen Bronner who were instrumental in the founding of the Association back in 1983. Both Ken and Ellen served as Presidents of the Association and Ken worked with Lake Ops, hauling logs and debris and supervising burning until he could no longer help due to his age and health....(not that he didn't keep trying). Ken remained active on the Board until 2014. Janise recently returned to the local area from South Carolina. Now that she is settled in, she is taking up where her parents left off.

We have the boat for you.



ROCKINGHAM MARINE



VISIT US ONLINE:
rockinghammarine.com/johnsoncity

CHAPARRAL **COBALT BOATS** **Manitou** **BENNINGTON** **Premier** **Avalon**

ROCKINGHAM MARINA

Family Oriented Marina
Seasonal Cafe & Boat Rentals
Year Round Premium Covered Slips and Fuel Services
Hewitt Boat Lift Sales & Installation
Boat Detailing Services Available

CALL US FOR DETAILS
AT 423-207-6016
639 ROCKINGHAM RD. JOHNSON CITY, TN 37615
Visit us online at:
www.rockinghammarina.com

(423) 833-8000 | 4710 N ROAN ST, JOHNSON CITY, TN 37615



Boone Lake Association
P.O. Box 111
Piney Flats, TN 37686

SUMMER/FALL 2024

The Boone Lake Association is a not-for-profit 501c3. Your contributions may be tax deductible in accordance with IRS regulations. Please check current rules for tax purposes as IRS tax codes may change. We appreciate your support! Every dollar you contribute goes to helping to keep Boone Lake clean and safe for everyone's enjoyment.

THANK YOU FOR CONTRIBUTING
GENEROUSLY TO KEEP BOONE LAKE CLEAN



Use this QR code
on your phone to
make a credit
card payment

CONTRIBUTION LEVEL:

- _____ \$2500+ Patron
- _____ \$1000+ Major Sponsor
- _____ \$500+ Sponsor
- _____ \$250+ Partner
- _____ \$100+ Supporter
- _____ \$50+ Contributor

Join Us!
Help Us!
Help You!



Please print clearly

Name: _____

Spouse/partner: _____

Mailing Address: _____

City: _____ State _____ Zip _____

Email: _____

Telephone: _____

Property Address _____

☐ Contact me about volunteering.

Please Donate by
Check payable to Boone Lake Association
or on our website or by PayPal

www.boonelakeassociation.org



See Inside

Cleaning Boone Lake since 1983

PINEY FLATS, TN 37686

P.O. BOX 111

BOONE LAKE
ASSOCIATION

NON-PROFIT
ORGANIZATION
U.S. POSTAGE PAID
KNOXVILLE, TN
PERMIT NO. 1