

# SHORELINER

## Boone Lake . . . All Year Long



### SAVE THE DATE! APRIL 20, 2024

The Boone Lake Association will hold its 25th Annual Cash for Trash Clean-up on Saturday, April 20, 2024. This successful event is due to the support of local businesses, corporate sponsors, governmental agencies, and most importantly you, the approximately 300 volunteers that come out annually to help keep Boone Lake clean and safe. Plans to celebrate this landmark event are underway. Please contact [boonelakeassociation@gmail.com](mailto:boonelakeassociation@gmail.com) if are interested in being a sponsor for this significant milestone.

SUN	MON	TUE	WED	THU	FRI	SAT
	1	2	3	4	5	6
7	8	9	10	11	12	13
14	15	16	17	18	19	20
21	22	23	24	25	26	27
28	29	30				

## Northern Lights shine on Boone Lake



## BLA's 2024 Transformation . . .



No.	Date	Type of Material	Size	Qty Cu Yds	County	Location
1	7/15/24	LOGS	Roll Off	38	Sullivan	Lakeview RV Park
2	7/15/24	LOGS	Roll Off	38	Sullivan	Lakeview RV Park
3	7/15/24	LOGS	Roll Off	38	Sullivan	Lakeview RV Park
4	7/15/24	LOGS	Roll Off	38	Sullivan	Lakeview RV Park
5	7/15/24	LOGS	Roll Off	38	Sullivan	Lakeview RV Park
6	7/15/24	LOGS	Roll Off	38	Sullivan	Lakeview RV Park
7	7/15/24	LOGS	Roll Off	38	Sullivan	Lakeview RV Park
8	7/15/24	LOGS	Roll Off	38	Sullivan	Lakeview RV Park
9	7/15/24	LOGS	Roll Off	38	Sullivan	Lakeview RV Park
10	7/15/24	LOGS	Roll Off	38	Sullivan	Lakeview RV Park
11	8/1/24	LOGS	Roll Off	38	Sullivan	Lakeview RV Park
12	8/1/24	LOGS	Roll Off	38	Sullivan	Lakeview RV Park
13	8/1/24	LOGS	Roll Off	38	Sullivan	Lakeview RV Park
14	8/1/24	LOGS	Roll Off	38	Sullivan	Lakeview RV Park
15	8/1/24	LOGS	Roll Off	38	Sullivan	Lakeview RV Park
16	8/1/24	LOGS	Roll Off	38	Sullivan	Lakeview RV Park
17	8/1/24	LOGS	Roll Off	38	Sullivan	Lakeview RV Park
18	8/1/24	LOGS	Roll Off	38	Sullivan	Lakeview RV Park
19	8/1/24	LOGS	Roll Off	38	Sullivan	Lakeview RV Park
20	8/1/24	LOGS	Roll Off	38	Sullivan	Lakeview RV Park
21	8/1/24	LOGS	Roll Off	38	Sullivan	Lakeview RV Park
22	8/1/24	LOGS	Roll Off	38	Sullivan	Lakeview RV Park
23	8/1/24	LOGS	Roll Off	38	Sullivan	Lakeview RV Park
24	8/1/24	LOGS	Roll Off	38	Sullivan	Lakeview RV Park
25	11/11/24	LOGS	Roll Off	38	Washington	Pickens Bridge
26	11/11/24	LOGS	Roll Off	38	Washington	Pickens Bridge
27	11/11/24	LOGS	Roll Off	38	Washington	Pickens Bridge
28	11/11/24	LOGS	Roll Off	38	Washington	Pickens Bridge
29	11/11/24	LOGS	Roll Off	38	Washington	Pickens Bridge
30	11/11/24	LOGS	Roll Off	38	Washington	Pickens Bridge
Total RECYCLED				950	cubic yards	

Bluff City Campaign  
\$3,850 Recycle expense

Point 9 Campaign  
\$2,475 Recycle expense

Helene Campaign  
\$2,364 Recycle expense



**BOONE LAKE ASSOCIATION**

**Piney Flats, TN 37686**

**[www.boonelakeassociation.org](http://www.boonelakeassociation.org)**

**[boonelakeassociation@gmail.com](mailto:boonelakeassociation@gmail.com)**

**[www.facebook.com/boonelakeassociation](https://www.facebook.com/boonelakeassociation)**

**WATCHING THE WATERS**

**Winter 2024**

**BLA Hotline: 423.360.5057**

**[@boonelakeassociation](https://www.instagram.com/boonelakeassociation)**



**HELENE RECOVERY.** Prayers and help to neighbors are still on all our minds as we wind down this year. Those of us living on or near Boone Lake remember Helene and how fortunate our homes, lake and dam were located just out of the Erwin-Asheville corridor of disaster. Yes, BLA and Washington County will still be clearing multi-years of logs and construction debris from Helene's path from the Doe-Watauga Rivers inflow through Spring 2025, but to grasp the magnitude please see the article inside about Helene.

**CLEAR LAKE.** Records have been broken to restore Boone Lake's shoreline and waters back to conditions existing before the 7-years of unruly tree growth and inflows, even before Helene hit us. **The number of floating, threatening trees removed by the crew with enhanced equipment this year exceeds any prior year in BLA's history.** Everyone knows that together with the help of over 300 volunteers on our Annual April Cleanup Event we take out a half dozen 40-yard roll-off dumpsters full of debris/trash/items; and in 2024 BLA crews cleared, cut and recycled over 30 log-filled dumpsters

into mulch. This was in addition to an equivalent volume of trees and debris taken out of the lake at Piney Flats, Pickens Bridge and Winged Deer park locations. Finally, once the lake dropped in the Fall the shoreline was scavenged, and another 60 piles are being burned off under burn permits to prevent their return into our lake next Spring. Johnson City provides BLA dumpsters and waste disposal at no cost; but BLA incurred \$12,000 in 2024 for waste disposal costs for Sullivan County locations.

**CLEAN WATER.** Publicity into the lack of continuous weekly testing and posting of water quality at Boone's beaches was highlighted by WJHL Channel 11 in August of this year. They reported that no government agency has done regular water testing of the lake in over 15 years; therefore, **BLA is the only organization that has been sampling Boone's waters.** With your support we wish to raise the bar and carry out weekly sampling of both the Watauga and S. Houston channels, including Boone Lake Dam beach. In addition, these results will be posted on BLA's website ([www.boonelakeassociation.org](http://www.boonelakeassociation.org)) for all to

view—by location before every weekend. See the article inside for more details.

**GIVING BACK.** BLA has expanded both recycling and weekly water quality testing. Thanks to you engaged homeowners and area businesses, **BLA was able to return \$200,000 in labor, fuel, material and expenses to the lake this year.** BLA plans to sustain this higher level of effort to the homeowners and users of Boone Lake in 2025 with your continued voluntary contributions. I encourage all who are not currently contributing to see the value and difference a clear and clean Boone Lake means to you and your families.

In closing I thank you for your consideration and contributions, and. . . **JOIN US—HELP US—HELP YOU.** Look at the 2024 results of your giving and putting the right tools in the hands of your BLA crews.

*Frank*

BLA's 19<sup>th</sup> President/CEO

### Boone Lake Fishing Report

Fall fishing has started to fade as the return of freezing temperatures and snow hit the area earlier this year than most. With that comes a bite that will be off the deeper points in the lake. Many of the bass fisherman as well as striper fisherman start to focus on smaller artificial and natural baits at this time of the year. The time is now to start to make that transition those smaller baits. A slower presentation may also be a wise ideal as water temperatures start to fall below

50 degrees. The lake center on both sides of point 2 will increasingly become one of the best areas to fish as the colder weather sets in for the winter. Wintertime can produce good and bad days but all types of fishing in the lake can produce. Crappie, Smallmouth, Brown Trout, and big Stripers can all be very productive at certain times during the winter season. Good luck and try to stay warm!



Derrick Paduch

### Your BLA Needs You

As we say good bye to 2024 and a very successful year keeping Boone Lake safe and clean we are looking ahead to 2025. Your BLA Board of Directors is looking for a couple lake lovers who want to be a part of providing direction to our Association, and its growing mission. If you love Boone Lake and want to ensure it continues to be a vital asset to our local area, please consider becoming a member of the Board. Reach out and have a coffee with one of our current Board members to learn more.



# Support Your Local Boone Lake Marinas



One great thing about Boone Lake in the winter is it's far less crowded with boats, water sports and overall activity. It is only the brave who can endure the winds and the water spray while trying to fish and boat during the winter months. With that being said...how can we support our local Boone Lake Marina's while the cold hovers?

Before going out for your daily excursion, you should check the forecast! Our area while beautiful during all 4 seasons, can get storms moving in here without much notice. This is where our marina's can help! Not only can they provide shelter for such storms or frigid cold, they can also

provide fuel – and some, such as Davis Marina, can also provide a hot cooked meal. And not to mention while most of our marina's provide fuel year-round and shelter if needed, such as Boone Lake Marina, Jay's Boat Dock, Lakeview Marina and Rockingham Marina – let's not forget about having all of your watercraft serviced. The winter is not only the ideal time to winterize your watercraft to protect it from the cold, but also the perfect time to have any repairs completed that you may have put off during the peak summer months. Boone Lake Marina, Lakeview Marina, Sonny's Marina and Rockingham Marina all do repair work and winterization of watercraft. Also, most

of the marina's sell boats - both new and used, jet skis, apparel and water sport accessories, such as life jackets, fishing accessories, ski/wake ropes, wake and surf boards.

So, if you find yourself needing shelter or fuel – you are in luck! Our local marinas are ready to serve. And in the event, you need a gift – you are in luck as well! Most of our marina's are ready and look forward to your purchases! In the end, it comes down to stay safe, stay warm, have fun and of course...SUPPORT OUR LOCAL MARINAS!



## A Boone Lake Love Story . . . Meet the Halls Frank Hahne

You cannot make up a better story of the American Dream: Boy meets girl, they fall in love, work hard for decades, build a dream home on Boone Lake that has, and will, give them decades of love, peace and joy together. Beth and Bill wish to share their blessings and love of Boone Lake with you, me and all our children who will enjoy our lake long after they have gone on. They have decided to bequeath and leave 1/2 of their estate as an endowment to clear, clean and preserve the lake that has given them so much happiness.

This is a first in the 40+ years of BLA's serving the community. I was overwhelmed when Bill came up to BLA's tent at Meet the Mountains this year at Winged Deer Park and asked me what our annual operating budget was to steward Boone Lake. Then they said they wished that BLA would continue to be around for another 40 years to take care of "Our" lake. **It was Beth's idea to commit half to where they live and Bill, with the help of David Paduch at UBS Financial, figured out how to preserve their endowment and earn enough to annually fund significant contributions to BLA's lake operations—at a future point in time.** They hope that, just maybe, some other lovers may see this opportunity too.

Bill and I are similar ages, and we laughed that as much as we both would like to help BLA right now—we all hope the good Lord grants us our three score and ten, and if we are fortunate another ten (and even a few more!) before the endowment is funded by our passing on! All kidding aside, this gracious gift will assure a future for BLA to continue to serve you, your children and your children's children. Bless you Beth and Bill.



**Hatley Pointe**

TOP MOUNTAIN DESTINATION  
ON THE

Offering year round adventure & amenities, retail, full bar & restaurant,  
all-new lodge, upgraded & uncrowded slopes, and impeccable service.

**EAST COAST**

BOUTIQUE MOUNTAIN RESORT | WWW.HATLEYPOINTE.COM | #HATLEYPOINTE  
578 Valley View Cir. Mars Hill, NC 28754





# JOHNSON CITY CELEBRATES 5 YEAR \$50 MILLION WASTEWATER PROJECT

BLA's CEO, representing Boone Lake Stakeholders, participated in the City's recognition of the almost \$50 million wastewater treatment improvements at the Brush Creek facility that protects the waters flowing from the Watauga River into Boone Lake. We are thankful that Johnson City built the Brush Creek facility to treat effluents back in the 1950s, during the same time frame that Boone Dam was built and Boone Lake created.

BLA has about 500 active members of the 1,800 lake-front and 4,000 lake-view homeowners. **BLA has been "Watching the Waters" of Boone Lake for 40 years** and periodically sampling and testing the water quality for the last 20+ years. BLA would then alert homeowners, boaters and swimmers of any non-compliant TDEC regulation results. **I am pleased to say that over 99% of these times past BLA has found**



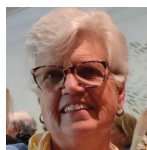
**good and compliant water quality** downstream of the Brush Creek Treatment Plant.

In the past TVA/ETSU tested the water quality at Boone Dam beach, but not in the last 20 years. TDEC conducts water quality mainly in streams, creeks and rivers, but not in Boone Lake. Therefore, in anticipation of the coming 2025 recreational season BLA has begun weekly water sampling, testing and posting of our water quality results to build a public database that will help our lake users have increased confidence in their recreation uses in and on the lake. With the help of Carefree Boat Club



furnishing a boat weekly, BLA plans to sample a half-dozen locations throughout the Watauga and S. Holston channels of the lake. We will hold an educational update to share our efforts as part of our 26<sup>th</sup> Annual Boone Lake Cleanup next April. BLA, representing thousands of lake supporters, celebrates Johnson City's \$50 million water treatment investments in enhanced storage capacity to absorb our storm inflows, a new sludge removal system to clarify the water and most importantly, the enhanced ability to disinfect water returned into our lake.

## 26th Annual Clean Up: April 26, 2025



Ann Larson

For our 26th consecutive year BLA will gather volunteers to help clean Boone Lake. This year's Cleanup will be April 26th. You can expect the same staging areas as in previous years and of course an end of day picnic at the Winged Deer Meredith Pavilion. Watch for our road signs and FB and Website announcements and look for another great Grand Prize drawing to be announced. We hope to see many of you join us...A clean lake is a happy lake!!



**VISIT US ONLINE:**  
[rockinghammarine.com/johnsoncity](http://rockinghammarine.com/johnsoncity)



(423) 833-8000 | 4710 N ROAN ST, JOHNSON CITY, TN 37615

## ROCKINGHAM MARINA

Family Oriented Marina  
Seasonal Cafe & Boat Rentals  
Year Round Premium Covered Slips and Fuel Services  
Hewitt Boat Lift Sales & Installation  
Boat Detailing Services Available

**CALL US FOR DETAILS AT 423-207-6016**  
639 ROCKINGHAM RD, JOHNSON CITY, TN 37615  
Visit us online at: [www.rockinghammarina.com](http://www.rockinghammarina.com)



# Helene--A Tale of Two Lakes . . .

How can a resident or user of Boone Lake understand how we fit into the bigger Helene stories we all read about this past Fall? I would like to share some of what I learned with you. My first job as a Ga Tech intern with the Savannah Corp of Engineers was running flood control computer programs for the Savannah River; now as a retired volunteer President/CEO of our BLA nonprofit I was invited by TVA to participate at their Annual Dam Safety meeting held in Johnson City Sept 10<sup>th</sup>-11<sup>th</sup> along with other TVA Partnerships like Eastman Chemical and BrightRidge. Then on Friday, September 27<sup>th</sup> Helene swept across the Appalachian region spreading significant and catastrophic flood damage to communities throughout northeast Tennessee and western North Carolina. When that floodwater began flowing into the Tennessee River watershed, TVA's network of dams, and employees, were already at work to protect people downstream.

TVA has been providing flood control of the Tennessee River as a core mission since its inception more than 91 years ago. Evaluating rainfall and stream flow data from across the Valley provides engineers in TVA's state-of-the-art River Forecast Center the information to make operational decisions to minimize flood impacts along the river system 24 hours a day, seven days a week, 365 days a year. Data from this Helene event shows that flood mitigation strategies enacted by TVA prevented approximately \$406 million of potential damages in Lenoir City, Chattanooga, Kingsport, Elizabethton, Clinton, and South Pittsburg.

TVA's ten large tributary reservoirs stored 404 billion gallons of water during the weather event – enough to fill 612,000 Olympic-sized swimming pools. Two months of normal rainfall in just 3 days to the Tennessee River Watershed. The reservoir system and its ability to store water

during floods led to significant overall reduction in flood crests in communities along the river system. At the end of each summer, the TVA begins the annual drawdown of upstream reservoirs to make room for the rains and snows of winter and spring. **Boone Lake is drawn down about 1 foot per week until a 20 foot drop is reached; whereas Douglas Lake is drawn down 10 feet per week until a 50 foot drop is reached.** Without TVA's system of dams, the river stages at Lenoir City, TN, and Chattanooga, TN, would have been about 21 to 23 feet higher than the observed levels during Helene. Nolichucky Dam withstood nearly twice the flow of Niagara Falls.

**BLA/Watauga Dam/Boone Lake** parallels on a smaller scale the TVA/Nolichucky Dam / Douglas Lake impact of Helene. The Watauga River at Elizabethton reached 5 feet above flood stage and is the highest flood level in Elizabethton since 1940. TVA's Watauga Dam on the Watauga River in Carter County, east of Elizabethton broke the previous record by about three feet. The Doe River at Elizabethton, reached nearly 3 feet above Flood Stage and just inches below the flood of record in 1998. The Watauga River brought unprecedented levels of logs and building debris down the channel into Boone Lake. BLA, like TVA at Douglas Lake, has worked to stem the flow upstream from our marinas and homeowners at the Winged Deer and Pickens Bridge locations. **Johnson City and Washington County have been overwhelmed by Helene causing the equivalent of 17 years of annual landfill at Glenn Iris** to be backlogged and stored for reduction. BLA realized that the normal weekly ramp removals by them would not be possible until things return to normal and contracted with a private company to clear the lake ramps, recycling the wood into mulch, and restoring access to the lake for all users.



**TVA/Nolichucky Dam / Douglas Lake**

"The Nolichucky Dam is relatively small compared to TVA's other dams, became a focal point of concern as the river reached a record peak of 1,266 feet at the dam – 9.5 feet above the previous record set in 1977. On the night of Sept. 27, after a day of heavy rainfall in the Great Smoky Mountains, the Nolichucky River was rising at two feet per hour. Around 1.3 million gallons of water were pouring over the dam each second at 11 p.m., according to the Tennessee Valley Authority. Owner and operator TVA issued a "Condition Red alert" on Sept. 27, warning that a failure of the Nolichucky Dam was imminent. The 94-foot dam, completed in 1913, was invisible under a muddy torrent of water. Water flow at the dam reached almost twice that of Niagara Falls. The peak daily water flow of Niagara Falls is around 700,000 gallons per second. Despite the highest water levels the dam had ever experienced, it stood firm and was "stable and secure" by the evening of Sept. 28, TVA said. Other reservoirs filled to the brim. TVA's 10 largest tributary dams would hold back a staggering 404 billion gallons of water during the weather event." **Daniel Dassow, Knoxville News Sentinel, September 30, 2024**

"Debris torn from Western North Carolina and East Ten-

nessee by flooding rivers largely dumped into one East Tennessee reservoir (Douglas Lake), and the cleanup of a hazardous debris field is taking the coordination of local, state and federal agencies. Three rivers that swelled to deadly levels during Hurricane Helene on Sept. 27 – the French Broad, Nolichucky and Pigeon – start in North Carolina and empty into Douglas Lake. They transformed the waters of the popular recreation and fishing destination to brown muck and left a one-square-mile island of wreckage after the historic floods." **Daniel Dassow, Knoxville News Sentinel, November 13, 2024**



**Frank Hahne**



The Douglas Dam was built by the TVA to help control flooding downstream in the Tennessee River and supply the WWII electrical need at Oak Ridge. Douglas Lake has over 500 miles of shoreline with a surface area greater than 30,000 acres at full pool. The reservoir itself is 43.1 miles long, with a maximum depth of 140 feet, and collects water from 4,541 square miles of watershed. **On Douglas Lake, the typical annual fluctuation of the water level is about 54 feet.** Douglas Dam was instrumental to help prevent downstream flood damage. Between Sept. 26 - Sept. 29, 182 billion gallons of water made Douglas Lake rise almost 22 feet in 3 days. That is enough water to fill Neyland Stadium in Knoxville 661 times.

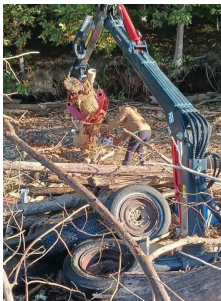
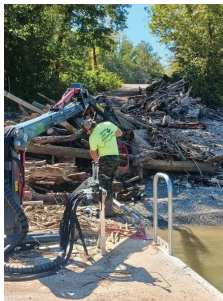


# Lake Ops had to Pay a Contractor to Clear Lake Access Ramps, Especially after Helene

For years lake-front and lake-view homeowners have asked BLA if burning waterlogged, smoking logs cleared from the lake was really necessary—and we have had to say to them that we were not aware of any economical alternative. The crew had to tow large logs all the way from Bluff City Point 13 to a safe, isolated Point 9 island or Point 10 cove to burn, since Sullivan County could not offer the pickup and landfill service that Johnson City brush trucks and Washington County landfill provided to BLA at no cost. This year we found a private contractor who would pick up, haul

away, grind and recycle the trees and logs into landscape mulch; but at a cost of \$8,500! Our crew had to cut, size and pack their 40-yard Rolloff containers to be acceptable—no trash allowed! Hurricane Helene overwhelmed Washington County with over 17 years of landfill capacity accumulated by cleanup contractors and homeowners on county land. The Johnson City brush trucks could not clear the mountains of wood BLA was taking out of the lake because there was no room to continue landfilling at Glenn Iris until Helene’s backlog

is worked off. Lake Operations plans for 2025 will include continuing RECYCLING based upon the positive feedback we have been given and the operational cost savings. Washington County is working to lower their disposal backlog and BLA will continue to follow their progress and restore regular pickup and disposal from the Pickens Bridge and Winged Deer takeout ramps. In closing, those of you living in Sullivan County, please encourage your Sullivan County representatives to continue to look for a way to join in, help us, help you.



## Water Quality Update

BLA is conducting water sampling weekly, weather permitting. Test results are posted on our webpage [boonelakeassociation.org](http://boonelakeassociation.org). If you haven't checked out our webpage recently, we encourage you to do so. You will find a lot of information and some great photos.



Ann Larson



## 2024 Was A Very Busy Year For Your Association

A huge effort at Bluff City, soon followed by the enormous effort to clean up after Hurricane Helene, in addition to our normal operations, kept our crew very busy this year. We partnered with a local company so that we could limit long hauls of logs and burning (see the following article). As the water rises again this Spring a lot of trash will be washed off the shoreline so 2025 is shaping up to be another challenge. Your Lake Ops crew is up to the challenge! (See article above.)

# Contributor report

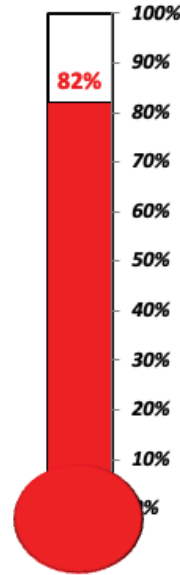
This may sound redundant, but it's well worth repeating. The following is a brief history of BLA's contributor history over the past few years. In 2014, before the discovery of the dam leakage, BLA's contributor count peaked at an all-time high of 601. Following the draw down, participation in BLA understandably fell to a low of 263 contributors in 2017. That nearly resulted in the dissolution of BLA due to a lack of funding. Since then there was a massive effort to rebuild BLA that has resulted in a much stronger, more organized and better equipped organization with the goal to match or exceed the 2014 level of 600 contributors. We recently instituted a large outreach program to reach that goal. While this effort enabled us to reach 536 contributors in 2023, we were still far short of 600. In 2024 we finished with 493 contributors compared with 536 in 2023. The good news is that our average contribution amount exceeds 2023 (\$195 vs \$172) resulting in our income beating 2023 by \$8,212. Our outreach in 2024 resulted in the addition of 51 new contributors but unfortunately about the same number of our past contributors did not contribute in 2024. If you have a suggestion of how we might more effectively expand our outreach please send an email to [boonelakeassociation@gmail.com](mailto:boonelakeassociation@gmail.com), and you might want to consider joining the BLA Board of Directors to help us reach these lake homeowners and users. If you know any of the 1,700 Boone Lake property

owners please ask them if they are current contributors, and if not, please ask them to support BLA. We all have a stake in a clean and safe Boone Lake. **Join Us .. Help US .. Help You**



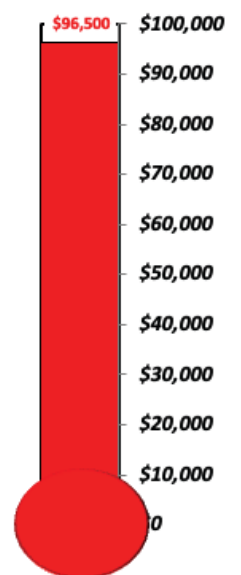
Gary Parker

## Individual Contributors Goal of 600



493 Contributors

## Individual Contributors \$100,000 Goal



Avg. Contribution \$195



Boone Lake Association  
P.O. Box 111  
Piney Flats, TN 37686

WINTER 2024

The Boone Lake Association is a not-for-profit 501c3. Your contributions may be tax deductible in accordance with IRS regulations. Please check current rules for tax purposes as IRS tax codes may change. We appreciate your support! Every dollar you contribute goes to helping to keep Boone Lake clean and safe for everyone's enjoyment.

**THANK YOU FOR CONTRIBUTING  
GENEROUSLY TO KEEP BOONE LAKE CLEAN**



Use this QR code  
on your phone to  
make a credit  
card payment

### CONTRIBUTION LEVEL:

- \_\_\_\_\_ \$2500+ **Patron**
- \_\_\_\_\_ \$1000+ **Major Sponsor**
- \_\_\_\_\_ \$500+ **Sponsor**
- \_\_\_\_\_ \$250+ **Partner**
- \_\_\_\_\_ \$100+ **Supporter**
- \_\_\_\_\_ \$50+ **Contributor**

**Join Us!  
Help Us!  
Help You!**



### Please print clearly

Name: \_\_\_\_\_

Spouse/partner: \_\_\_\_\_

Mailing Address: \_\_\_\_\_

City: \_\_\_\_\_ State \_\_\_\_\_ Zip \_\_\_\_\_

Email: \_\_\_\_\_

Telephone: \_\_\_\_\_

Property Address \_\_\_\_\_

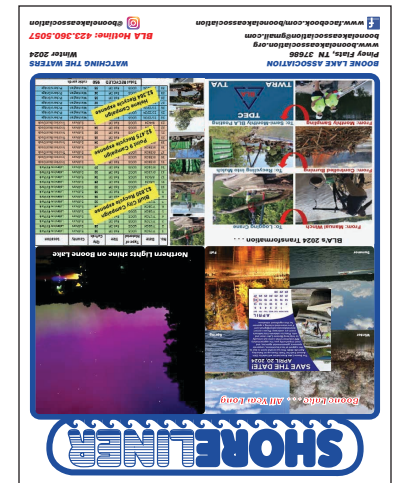
☐ Contact me about volunteering.

Please Donate by  
Check payable to Boone Lake Association  
or on our website or by PayPal

[www.boonelakeassociation.org](http://www.boonelakeassociation.org)



This is a first in the 40+ years of BLA's serving the community. I was overwhelmed when Bill came up to BLA's tent at Meet the Mountains this year at Winged Deer Park and asked me what our annual operating budget was to steward Boone Lake. Then they said they wished that BLA would continue to be around for another 40



# BOONE LAKE ASSOCIATION

NON-PROFIT  
ORGANIZATION  
U.S. POSTAGE PAID  
KNOXVILLE, TN  
PERMIT NO. 1